

Mono

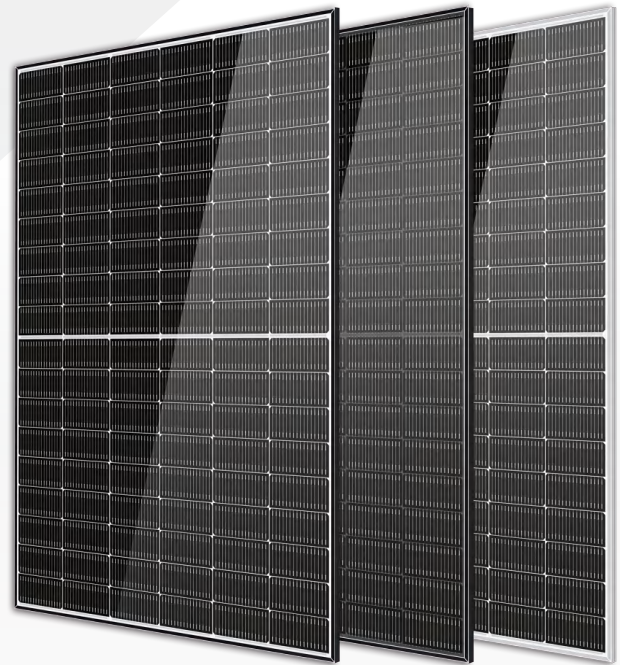
Bifacial

HORAY

Solar Galaxy

550–570 Watt N-Type MONO-BIFACIAL MODULE

- IEC61215: 2021
- IEC61730: 2023
- TUV Rheinland Standard
- Lloyd'S Ariel Re
Solar Performance Insurance
- ISO9001: 2015
Quality Management System
- ISO14001:
Environmental Management System
- CE: Europe Standard
- Inmetro Certificate
- Japan JP-AC
- China Quality Certification Centre
Solar product certification



KEY FEATURES



SMBB Cell

More uniform current collection capability, reducing the current heat loss of the internal cells.



Low Light Features

Higher performance under low light environment.



Higher Output Power

The output power of 108 half-cells
Monocrystalline modules is up to 570W.



LID Free

N-type solar cell has no LID naturally which can increase power generation.



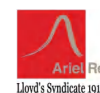
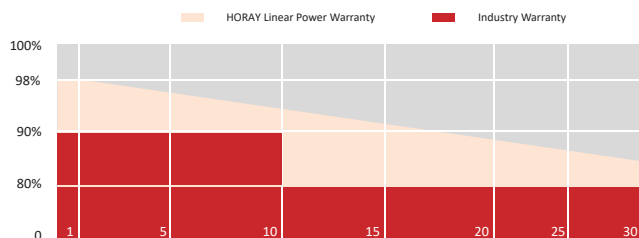
Harsh Environmental Adaptability

Strict salt spray and ammonia corrosion test by the third party.



Load Capacity

Mechanical load tests including wind load 2400 Pa and snow load 5400 Pa.



HEADQUARTER: HORAY SOLAR CO., LTD.

GLOBAL MARKETING AND SERVICE: HORAY SOLAR GMBH

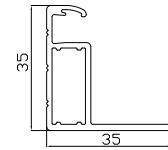
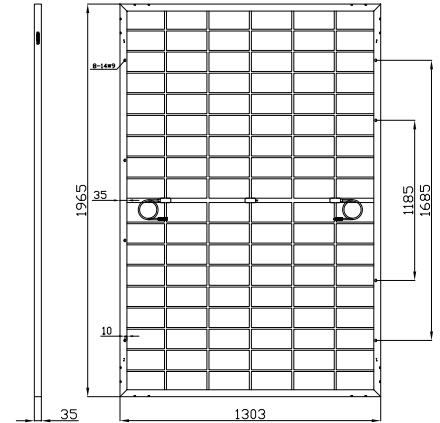
✉ sales@horaysolar.com 🌐 www.horaysolar.com ☎ +86-510 83580688
 📍 NO.30-5, East Yanxin Road, Huishan District, Wuxi 214177 Jiangsu P.R China

✉ info@horaysolar.com 🌐 www.horaysolar.com
 📍 Robert-Bosch-StraBe 27-29,63225 Langen , Germany

SPECIFICATIONS

Weight	31.5kg
Dimension	1965mm*1303mm*35mm
Cell Dimension	210*105mm
Cell Amount	54*2 pcs
Maximum System Voltage	1500V
Junction Box	IP68
Type of the front glass	2.0mm Coated ultra clear glass
Type of the back glass	2.0mm Heat-strengthened glass
Frame	Aluminum Alloy
Cable	4mm ² ,+300,-300mm/±1300mm Length can be customized
Connector	MC4 compatible
Application Level	Class A

MECHANICAL DIAGRAMS



ELECTRICAL PARAMETERS AT STC

Module Type	HS550TC-MHG-D	HS555TC-MHG-D	HS560TC-MHG-D	HS565TC-MHG-D	HS570TC-MHG-D
Power	550W	555W	560W	565W	570W
Open Circuit Voltage	39.47V	39.58V	39.69V	39.80V	39.96V
Short Circuit Current	17.49A	17.56A	17.67A	17.74A	17.78A
Maximum Power Voltage	33.97V	34.13V	34.24V	34.40V	34.61V
Maximum Power Current	16.19A	16.26A	16.36A	16.43A	16.47A
Module Efficiency	21.48%	21.68%	21.87%	22.07%	22.26%

* Under Standard Test Conditions (STC) of irradiance of 1000 W/m², spectrum AM 1.5 and cell temperature of 25°C.

ELECTRICAL PARAMETERS AT BNPI

Power	605W	611W	616W	622W	627W
Open Circuit Voltage	39.47V	39.58V	39.69V	39.80V	39.96V
Short Circuit Current	19.24A	19.32A	19.43A	19.51A	19.56A
Maximum Power Voltage	33.97V	34.13V	34.24V	34.40V	34.61V
Maximum Power Current	17.81A	17.89A	17.99A	18.07A	18.11A

*Rear side power gain: The additional gain from the rear side compared to the power of the front side at the standard test condition. It depends on mounting (structure,height,tilt angle etc.)and albedo of the ground.

ELECTRICAL PARAMETERS AT NMOT

Power	419W	423W	427W	431W	434W
Open Circuit Voltage	37.30V	37.40V	37.51V	37.61V	37.76V
Short Circuit Current	14.00A	14.06A	14.15A	14.20A	14.24A
Maximum Power Voltage	31.72V	31.88V	31.98V	32.13V	32.33V
Maximum Power Current	13.21A	13.27A	13.34A <td 13.40A	13.43A	

* Under Nominal Module Operating Temperature (NMOT), irradiance of 800 W/m², spectrum AM 1.5, ambient temperature 20°C, wind speed 1 m/s.

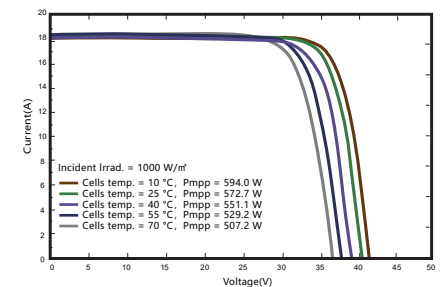
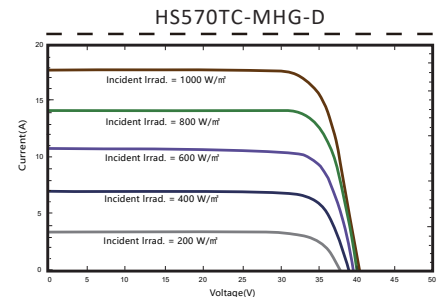
TEMPERATURE CHARACTERISTICS

NMOT	45±2°C
Temp Coefficient of ISC	+0.04%/°C
Temp Coefficient of VOC	-0.23%/°C
Temp Coefficient of Pmax	-0.28%/°C

PACKING CONFIGURATION

Modules/Pallet	32 Pieces
Packaging Description	22 Pallets, Total=(32+32)x11=704 Pieces
Modules/40' Container	704 Pieces

IV CHARACTERISTICS



MAXIMUM RATING

Power selection	0~+5W
Measuring uncertainty of Pm	0~±3%
Operating Temperature	-40°C~+85°C
Wind Load/Snow Load	2400pa/5400pa
Fuse Current	30A

15 YEARS

Quality
Warranty

30 YEARS

Power
Warranty

CAUTION: READ SAFETY AND INSTALLATION INSTRUCTIONS BEFORE USING THE PRODUCT.

©2024 Horay Solar Co.,Ltd. All rights reserved. Specifications included in this datasheet are subject to change without notice.

Version number: TC_MHG_EN_2024_A