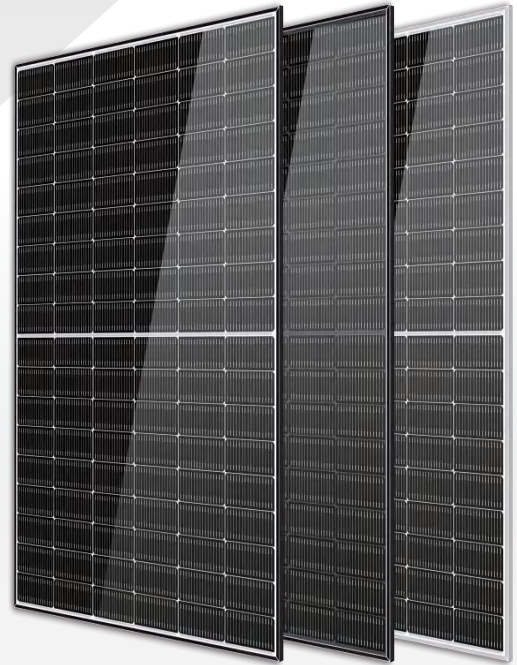


## Solar Ocean

### 425–445 Watt N-Type MONO-FACIAL MODULE

- IEC61215: 2021
- IEC61730: 2023
- TUV Rheinland Standard
- Lloyd'S Ariel Re
- Solar Performance Insurance
- ISO9001: 2015
- Quality Management System
- ISO14001:
- Environmental Management System
- CE: Europe Standard
- Inmetro Certificate
- Japan JP-AC
- China Quality Certification Centre
- Solar product certification



#### KEY FEATURES



##### SMBB Cell

More uniform current collection capability, reducing the current heat loss of the internal cells.



##### Low Light Features

Higher performance under low light environment.



##### Higher Output Power

The output power of 108 half-cells Monocrystalline modules is up to 455W.



##### LID Free

N-type solar cell has no LID naturally which can increase power generation.



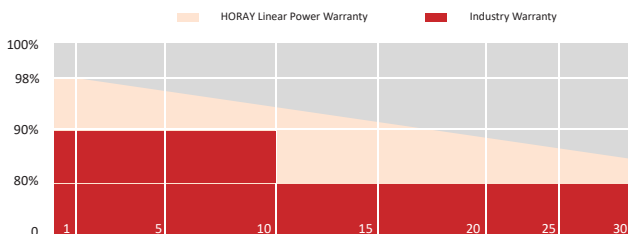
##### Harsh Environmental Adaptability

Strict salt spray and ammonia corrosion test by the third party.

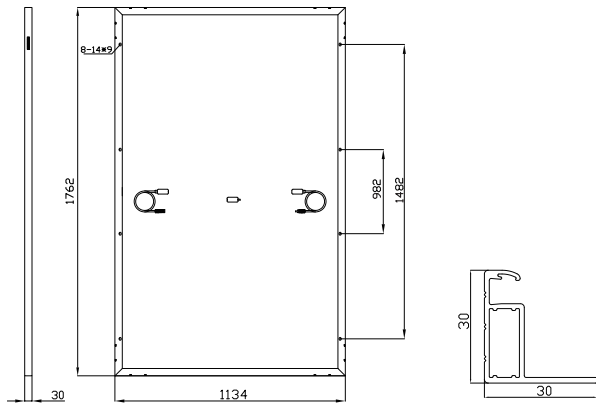


##### Load Capacity

Mechanical load tests including wind load 2400 Pa and snow load 5400 Pa.



## MECHANICAL DIAGRAMS



## SPECIFICATIONS

Weight	21kg
Dimension	1762mm*1134mm*30mm
Cell Dimension	182.2*93.4mm
Cell Amount	54*2 pcs
Maximum System Voltage	1500V
Junction Box	IP68
Frame	Aluminum Alloy
Cable	4mm <sup>2</sup> , +300,-300mm, Length can be customized
Connector	MC4 compatible
Application Level	Class A

## ELECTRICAL PARAMETERS AT STC

Module Type	HS425TC-MHA	HS430TC-MHA	HS435TC-MHA	HS440TC-MHA	HS445TC-MHA
Power	425W	430W	435W	440W	445W
Open Circuit Voltage	38.95V	39.16V	39.36V	39.57V	39.77V
Short Circuit Current	13.58A	13.65A	13.72A	13.8A	13.87A
Maximum Power Voltage	32.37V	32.58V	32.78V	32.99V	33.19V
Maximum Power Current	13.13A	13.2A	13.27A	13.34A	13.41A
Module Efficiency	21.3%	21.5%	21.8%	22.0%	22.3%

\* Under Standard Test Conditions (STC) of irradiance of 1000 W/m<sup>2</sup>, spectrum AM 1.5 and cell temperature of 25°C.

## ELECTRICAL PARAMETERS AT NMOT

Power	324W	328W	331W	335W	339W
Open Circuit Voltage	38.95V	39.16V	39.36V	39.57V	39.77V
Short Circuit Current	10.35A	10.40A	10.45A	10.52A	10.57A
Maximum Power Voltage	32.37V	32.58V	32.78V	32.99V	33.19V
Maximum Power Current	10.01A	10.06A	10.11A	10.17A	10.22A

\* Under Nominal Module Operating Temperature (NMOT), irradiance of 800 W/m<sup>2</sup>, spectrum AM 1.5, ambient temperature 20°C, wind speed 1 m/s.

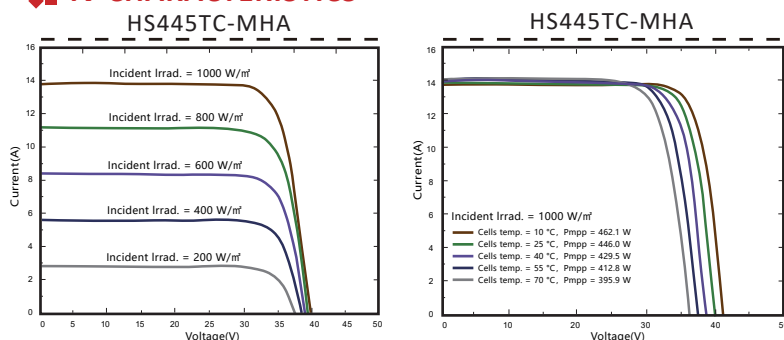
## TEMPERATURE CHARACTERISTICS

NMOT	45±2°C	Temp Coefficient of ISC	+0.04%/°C
Temp Coefficient of VOC	-0.23%/°C	Temp Coefficient of Pmax	-0.28%/°C

## PACKING CONFIGURATION

Modules/Pallet	37 Pieces	Modules/40' Container	962 Pieces
Packaging Description	26 Pallets, Total=(37+37)x13=962 Pieces		

## IV CHARACTERISTICS



## MAXIMUM RATING

Power selection	0~+5W
Measuring uncertainty of Pm	0~±3%
Operating Temperature	-40°C~+85°C
Wind Load/Snow Load	2400pa/5400pa
Fuse Current	25A

**12 YEARS** Quality Warranty

**30 YEARS** Power Warranty

CAUTION: READ SAFETY AND INSTALLATION INSTRUCTIONS BEFORE USING THE PRODUCT.

©2024 Horay Solar Co.,Ltd. All rights reserved. Specifications included in this datasheet are subject to change without notice.

Version number: MHA\_EN\_2024\_A