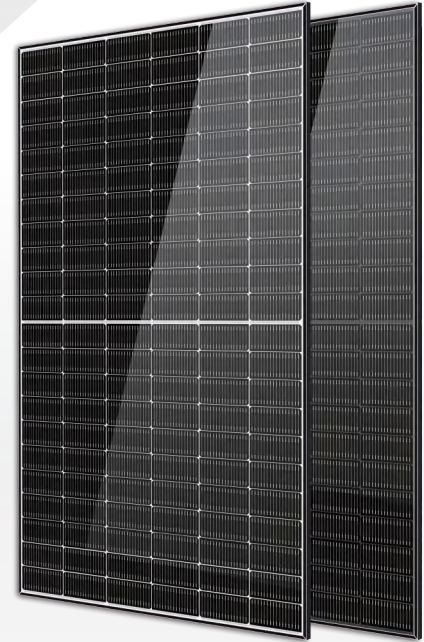


## Solar Ocean

### 540–565 Watt N-Type MONO-FACIAL MODULE

- IEC61215: 2021
- IEC61730: 2023
- TUV Rheinland Standard
- Lloyd'S Ariel Re
- Solar Performance Insurance
- ISO9001: 2015
- Quality Management System
- ISO14001:
- Environmental Management System
- CE: Europe Standard
- Inmetro Certificate
- Japan JP-AC
- China Quality Certification Centre
- Solar product certification



#### KEY FEATURES



##### SMBB Cell

More uniform current collection capability, reducing the current heat loss of the internal cells.



##### Low Light Features

Higher performance under low light environment.



##### Higher Output Power

The output power of 132 half-cells Monocrystalline modules is up to 565W.



##### LID Free

N-type solar cell has no LID naturally which can increase power generation.



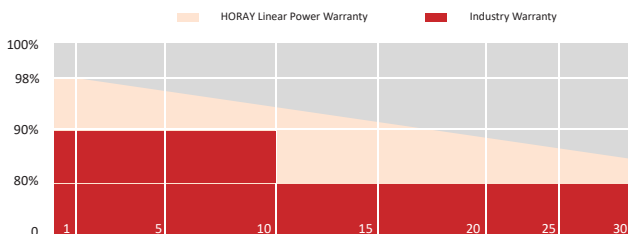
##### Harsh Environmental Adaptability

Strict salt spray and ammonia corrosion test by the third party.

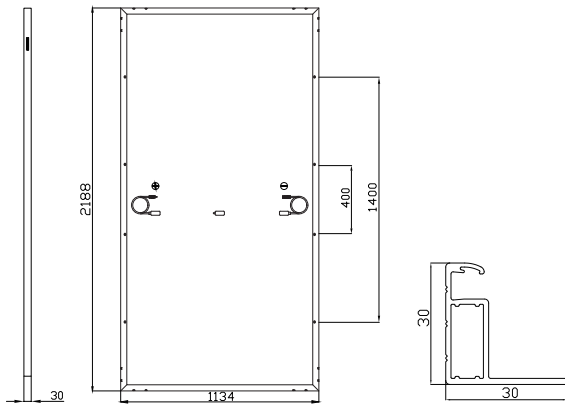


##### Load Capacity

Mechanical load tests including wind load 2400 Pa and snow load 5400 Pa.



## MECHANICAL DIAGRAMS



## SPECIFICATIONS

Weight	27.5kg
Dimension	2188mm*1134mm*30mm
Cell Dimension	182.2*95.8mm
Cell Amount	66*2 pcs
Maximum System Voltage	1500V
Junction Box	IP68
Frame	Aluminum Alloy
Cable	4mm <sup>2</sup> , +300,-300mm, Length can be customized
Connector	MC4 compatible
Application Level	Class A

## ELECTRICAL PARAMETERS AT STC

Module Type	HS540TC-MHB	HS545TC-MHB	HS550TC-MHB	HS555TC-MHB	HS560TC-MHB	HS565TC-MHB
Power	540W	545W	550W	555W	560W	565W
Open Circuit Voltage	47.12V	47.33V	47.55V	47.76V	47.98V	48.05V
Short Circuit Current	14.39A	14.46A	14.52A	14.59A	14.65A	14.76A
Maximum Power Voltage	39.97V	40.15V	40.33V	40.52V	40.70V	40.76V
Maximum Power Current	13.51A	13.57A	13.64A	13.70A	13.76A	13.86A
Module Efficiency	21.76%	21.97%	22.17%	22.37%	22.57%	22.77%

\* Under Standard Test Conditions (STC) of irradiance of 1000 W/m<sup>2</sup>, spectrum AM 1.5 and cell temperature of 25°C.

## ELECTRICAL PARAMETERS AT NMOT

Power	453W	457W	461W	465W	469W	474W
Open Circuit Voltage	47.12V	47.33V	47.55V	47.76V	47.98V	48.05V
Short Circuit Current	10.96A	11.02A	11.07A	11.12A	11.17A	11.25A
Maximum Power Voltage	39.97V	40.15V	40.33V	40.52V	40.70V	40.76V
Maximum Power Current	10.30A	10.34A	10.39A	10.44A	10.48A	10.56A

\* Under Nominal Module Operating Temperature (NMOT), irradiance of 800 W/m<sup>2</sup>, spectrum AM 1.5, ambient temperature 20°C, wind speed 1 m/s.

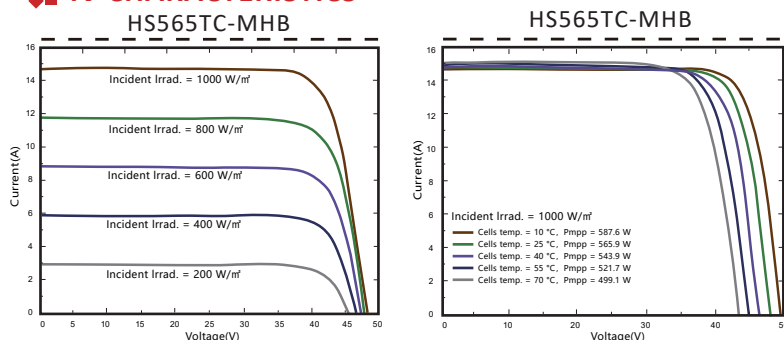
## TEMPERATURE CHARACTERISTICS

NMOT	45±2°C	Temp Coefficient of ISC	+0.04%/°C
Temp Coefficient of VOC	-0.23%/°C	Temp Coefficient of Pmax	-0.28%/°C

## PACKING CONFIGURATION

Modules/Pallet	37 Pieces	Modules/40' Container	740 Pieces
Packaging Description	20 Pallets, Total=(37+37)x10=740 Pieces		

## IV CHARACTERISTICS



## MAXIMUM RATING

Power selection	0~+5W
Measuring uncertainty of Pm	0~±3%
Operating Temperature	-40°C~+85°C
Wind Load/Snow Load	2400pa/5400pa
Fuse Current	30A

**12 YEARS** Quality Warranty

**30 YEARS** Power Warranty

CAUTION: READ SAFETY AND INSTALLATION INSTRUCTIONS BEFORE USING THE PRODUCT.

©2024 Horay Solar Co.,Ltd. All rights reserved. Specifications included in this datasheet are subject to change without notice.

Version number: MHA\_EN\_2024\_A