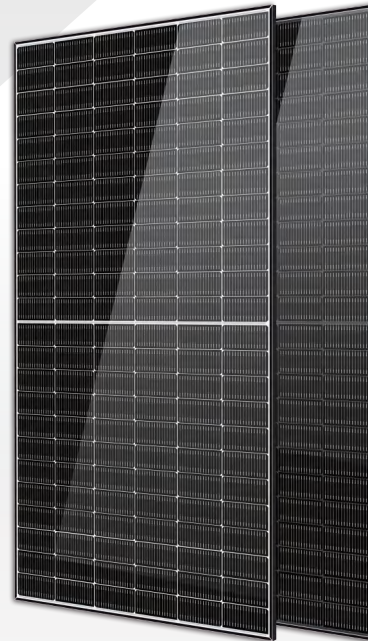


## Solar Ocean

### 570–590 Watt N-Type MONO-FACIAL MODULE

- IEC61215: 2021
- IEC61730: 2023
- TUV Rheinland Standard
- Lloyd'S Ariel Re
- Solar Performance Insurance
- ISO9001: 2015
- Quality Management System
- ISO14001:
- Environmental Management System
- CE: Europe Standard
- Inmetro Certificate
- Japan JP-AC
- China Quality Certification Centre
- Solar product certification



#### KEY FEATURES



##### SMBB Cell

More uniform current collection capability, reducing the current heat loss of the internal cells.



##### Low Light Features

Higher performance under low light environment.



##### Higher Output Power

The output power of 144 half-cells Monocrystalline modules is up to 590W.



##### LID Free

N-type solar cell has no LID naturally which can increase power generation.



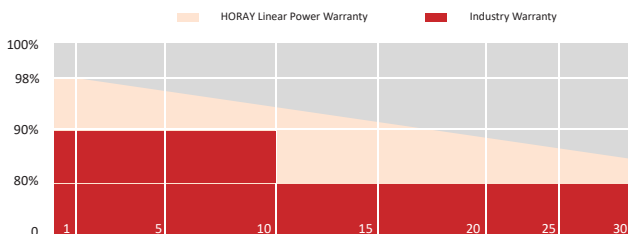
##### Harsh Environmental Adaptability

Strict salt spray and ammonia corrosion test by the third party.

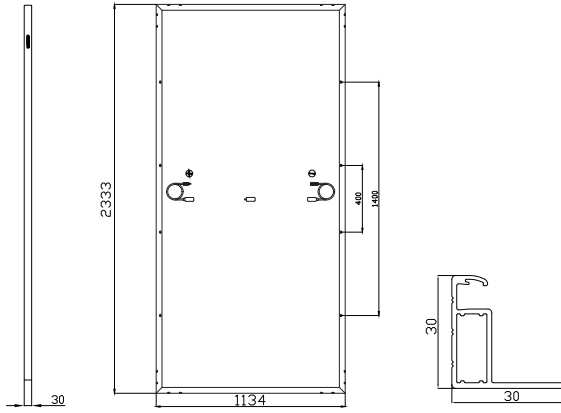


##### Load Capacity

Mechanical load tests including wind load 2400 Pa and snow load 5400 Pa.



## MECHANICAL DIAGRAMS



## SPECIFICATIONS

Weight	29.5kg
Dimension	2333mm*1134mm*30mm
Cell Dimension	182.2*93.4mm
Cell Amount	72*2 pcs
Maximum System Voltage	1500V
Junction Box	IP68
Frame	Aluminum Alloy
Cable	4mm <sup>2</sup> , +300,-300mm, Length can be customized
Connector	MC4 compatible
Application Level	Class A

## ELECTRICAL PARAMETERS AT STC

Module Type	HS570TC-MHA	HS575TC-MHA	HS580TC-MHA	HS585TC-MHA	HS590TC-MHA
Power	570W	575W	580W	585W	590W
Open Circuit Voltage	51.25V	51.42V	51.60V	51.82V	52.02V
Short Circuit Current	14.08A	14.16A	14.23A	14.29A	14.36A
Maximum Power Voltage	42.77V	42.91V	43.06V	43.24V	43.41V
Maximum Power Current	13.33A	13.40A	13.47A	13.53A	13.59A
Module Efficiency	21.5%	21.7%	21.9%	22.1%	22.3%

\* Under Standard Test Conditions (STC) of irradiance of 1000 W/m<sup>2</sup>, spectrum AM 1.5 and cell temperature of 25°C.

## ELECTRICAL PARAMETERS AT NMOT

Power	434W	438W	442W	446W	450W
Open Circuit Voltage	51.25V	51.42V	51.60V	51.82V	52.02V
Short Circuit Current	10.73A	10.79A	10.84A	10.89A	10.94A
Maximum Power Voltage	42.77V	42.91V	43.06V	43.24V	43.41V
Maximum Power Current	10.16A	10.21A	10.26A	10.31A	10.36A

\* Under Nominal Module Operating Temperature (NMOT), irradiance of 800 W/m<sup>2</sup>, spectrum AM 1.5, ambient temperature 20°C, wind speed 1 m/s.

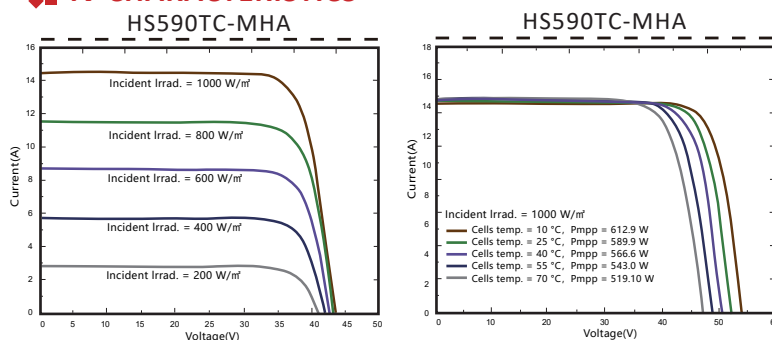
## TEMPERATURE CHARACTERISTICS

NMOT	45±2°C	Temp Coefficient of ISC	+0.04%/°C
Temp Coefficient of VOC	-0.23%/°C	Temp Coefficient of Pmax	-0.28%/°C

## PACKING CONFIGURATION

Modules/Pallet	36 Pieces	Modules/40' Container	720 Pieces
Packaging Description	20 Pallets, Total=(36*20)x10=720 Pieces		

## IV CHARACTERISTICS



## MAXIMUM RATING

Power selection	0~+5W
Measuring uncertainty of P <sub>m</sub>	0~±3%
Operating Temperature	-40°C~+85°C
Wind Load/Snow Load	2400pa/5400pa
Fuse Current	25A

**12 YEARS** Quality Warranty

**30 YEARS** Power Warranty

CAUTION: READ SAFETY AND INSTALLATION INSTRUCTIONS BEFORE USING THE PRODUCT.

©2024 Horay Solar Co.,Ltd. All rights reserved. Specifications included in this datasheet are subject to change without notice.

Version number: MHA\_EN\_2024\_A